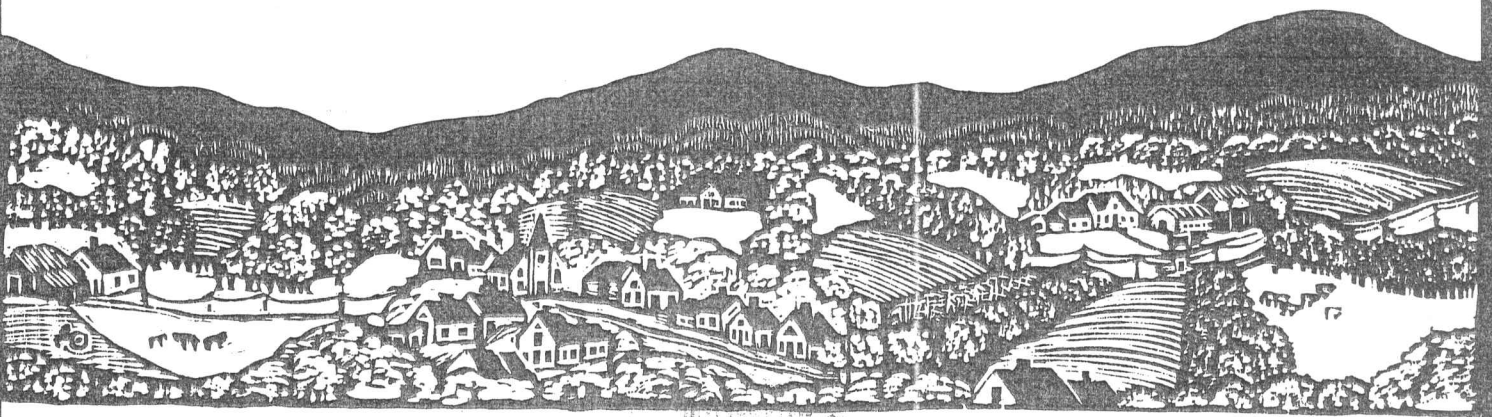


VNRC Bulletin



LIBRARY 97 VERMONT

OCT 20 1987

10/87

What are Vermont's most important characteristics? What do you value most about your community and your state?

How is Vermont's growth boom affecting you and your community?

What do you think about Vermont's farm industry and where it's going?

What are your thoughts about the availability of housing and of good jobs for all Vermonters?

How do you want Vermont to look twenty years from now?

GOVERNOR'S COMMISSION ON GROWTH AND VERMONT'S FUTURE
ANNOUNCED:

YOUR PARTICIPATION IS NEEDED!

On September 22, Governor Madeleine Kunin announced a new commission to plan for Vermont's future. The twelve-member panel, to be known as "The Governor's Commission on Vermont's Future: Guidelines for Growth" is charged with studying Vermont citizens' attitudes on the issue of growth, and to suggest guidelines and mechanisms for dealing with Vermont's development future.

Through a series of nine public hearings to be held across the state this fall, the Commission will hear the opinions of Vermonters on a variety of issues related to growth in Vermont. The Commission will hear views on such topics as resource conservation, agricultural land preservation, the availability of housing and good jobs for Vermonters, and the social diversity, vitality, and economic strength of communities.

The Commission needs to hear your views! The report that the Commission prepares for the Governor will be the basis for key growth management legislation in the upcoming legislative session. All Vermonters who have an interest in conserving Vermont's natural resources should either attend one of the hearings or let the Commission know in a letter how you feel about the future of Vermont.

"I believe Vermonters want to have a say about the future of this state and not be bystanders to change," said Governor Kunin. "This Commission will have a responsibility greater than any commission I have appointed as Governor, because I look to it to paint a portrait of the people of this state, what it looks like today, and what we would like it to look like in the year 2000 and beyond."

The hand-picked Commission will be chaired by Douglas M. Costle, who is Dean of Vermont Law School and former U.S. EPA administrator under President Jimmy Carter. The other Commission members are:

Elizabeth Bankowski, VT Secretary of Civil and Military Affairs and Chief of Staff to Governor Kunin; Polly Billings, owner of F.H. Gillingham & Sons, a general store; Darby Bradley, Legal Counsel to the Vermont Land Trust and former Chair, Vermont Environmental Board; Arthur Gibb, a banking and investment counsel who served in the VT General Assembly for 24 years and was instrumental in the creation of Act 250; Miles Jensen, Executive Director of Champlain Industries; Robert Lawson, Editor of Vermont Business Magazine; Wayne C. Patenaude, a St. Johnsbury dairy farmer; Sister Janice Ryan, President of Trinity College; Mark Snelling, President of Shelburne Corporation, a manufacturer of ski accessories; Donald Tarinelli, principal owner of Haystack Ski Resort; Betty Wheeler, Middlebury Town Manager and President, Vermont League of Cities and Towns.

Clearly, the Commission is composed of members with a broad variety of backgrounds and viewpoints. The conclusions that the Commissions will draw will depend on the thoughts it hears from the Vermonters who attend or contact them. Be sure your feelings are represented.

"We have been working for years to build a framework for growth management legislation," says VNRC Executive Director R. Montgomery Fischer. "Although Act 250 has been an important land use management tool since its passage in 1970, environmentalists have been concerned that it is only reactionary--lacking any means to plan for Vermont's future," says Fischer.

"VNRC's study on corporate land speculation--the 'parcellization' of Vermont--gave us yet another strong confirmation that Vermont needs planning now," says Fischer. "Vermonters need to state clearly, before development proposals are made, just how they want their area developed and what they want conserved."

According to Governor Kunin, the growth legislation which will come out of the Commission's report is likely to strengthen Vermont's regional planning capabilities.

"The upcoming hearings represent a one-of-a-kind opportunity for Vermonters to let their leaders know how they feel about Vermont's future growth--and have their opinions really be counted," says Fischer. "Vermonters who are interested in planning for the future of Vermont's natural resources and way of life can, this fall, help lay the framework for new growth management legislation."

The public hearing agenda of the new Governor's Commission on Vermont's Future: Guidelines for Growth is listed below. Make a note on your calendar of the hearing nearest you.

- October 14: Manchester Elementary School (West off Rt. 7 on Memorial Ave.)
- October 15: Springfield High School auditorium (from Rt. 11, turn onto South Street at first traffic light)
- October 21: Lyndon State College, Alexander Twilight Theater
- October 27: Rutland Jr. High School cafeteria (West off Rt. 7 onto Kendall Ave. to Library Ave.)
- October 29: Williston Elementary School cafeteria (on Rt. 2 in center of town)
- November 4: Hartford High School cafeteria (on Rt. 5, White River Jct.)
- November 5: Bellows Free Academy auditorium (Rt. 7, St. Albans)
- November 9: VT ETV Studio, Fort Ethan Allen, Winooski (off Rt. 15 three miles east of Winooski. Seating limited to 150.)
- November 10: Barre Opera House (City Hall, at Rt.'s 14 and 302. Parking in rear. Handicapped assistance available.)

All hearings begin at 7:00 p.m. except November 9 hearing, which starts at 8:00 p.m.

OR WRITE: Douglas M. Costle, Chair, Governor's Commission on Vermont's Future,
c/o Governor's Office, 109 State St., Pavilion Bldg., Montpelier, VT 05602.

Vermont Natural Resources Council
9 Bailey Avenue
Montpelier, Vermont 05602

Non-Profit Org.
U.S. Postage
Paid
Montpelier, Vt.
Permit No. 285



UNIVERSITY OF VERMONT
BAILEY LIBRARY
SERIALS DEPT
BURLINGTON VT 05405