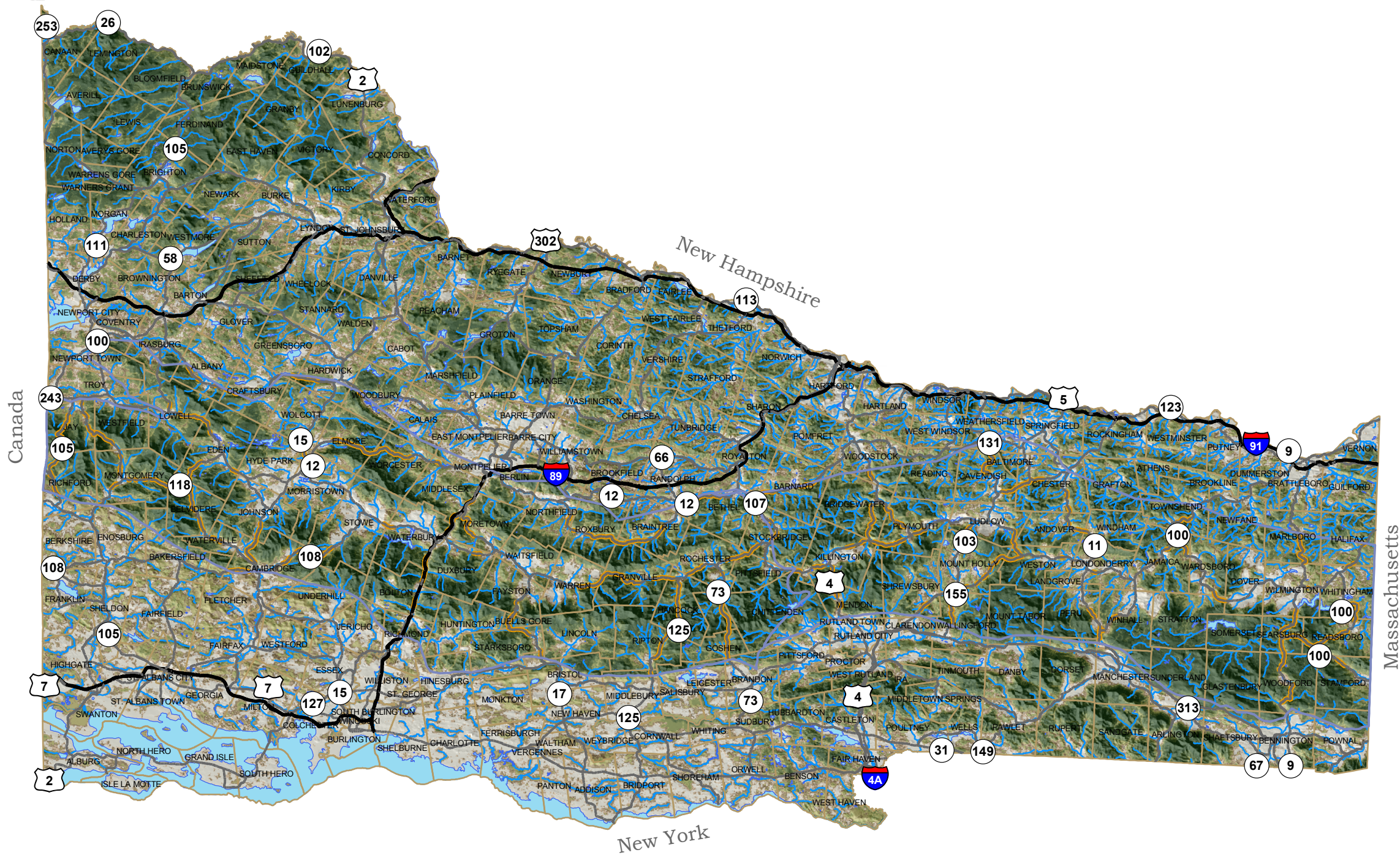


WILDLIFE ROAD CROSSING ZONES IN THE GREEN MOUNTAINS



Data Sources; Vermont Fish and Wildlife Department, Vermont Center for Geographic Information.

Universal Transverse Mercator Projection
NAD1983 Datum
Map by Jens Hilke

July 2009



Road Crossing Zones are a subset and generalization of a GIS model created by Vermont Agency of Transportation and Vermont Fish & Wildlife Department. The parent dataset, called Road Crossing Values (RCV) is not shown on this map, but is based on the proximity of good quality habitat to a state road (See WSA below). We limited this dataset to our project area along the spine of the Green Mountains. We then combined RCV values of 7 or higher and referenced the 2004 roadkill database (also not shown) to create the more generalized "Zones" depicted on this map. These zones served as the starting point for field work to identify priority crossing areas within these larger Zone designations.

Wildlife Suitability Analysis is a predictive model based on 1) Human population density, 2) Land Use / Land Cover and 3) core forest blocks. The darker greens indicate areas that have a greater probability of being good habitat for wildlife. It does not show actual habitat quality.



0 5 10 20 30 40 Miles