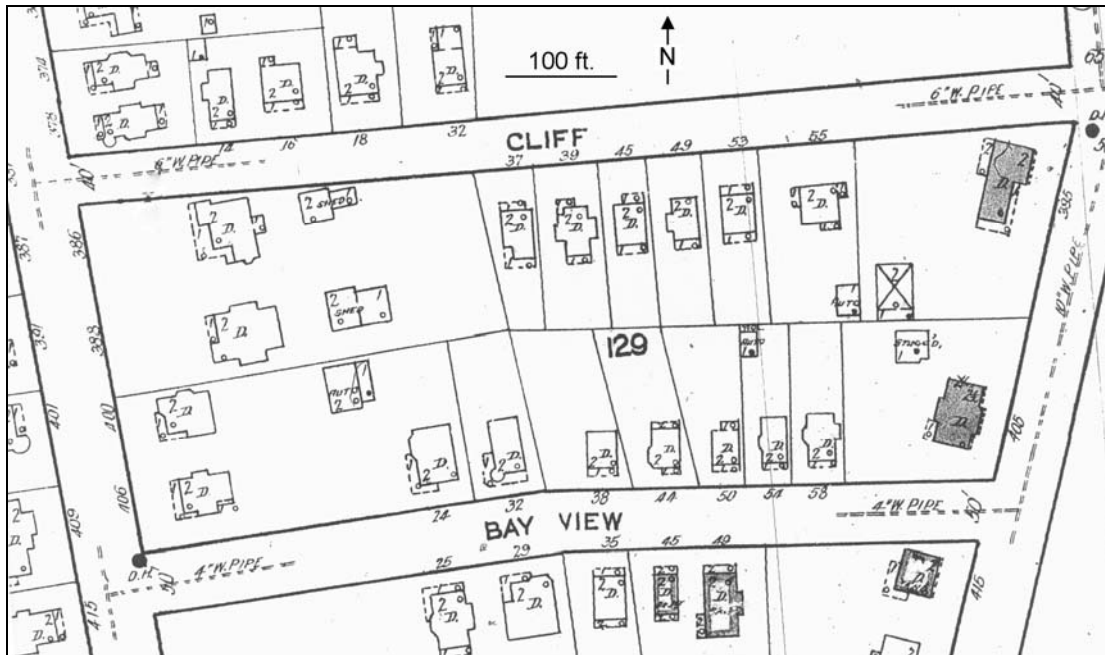


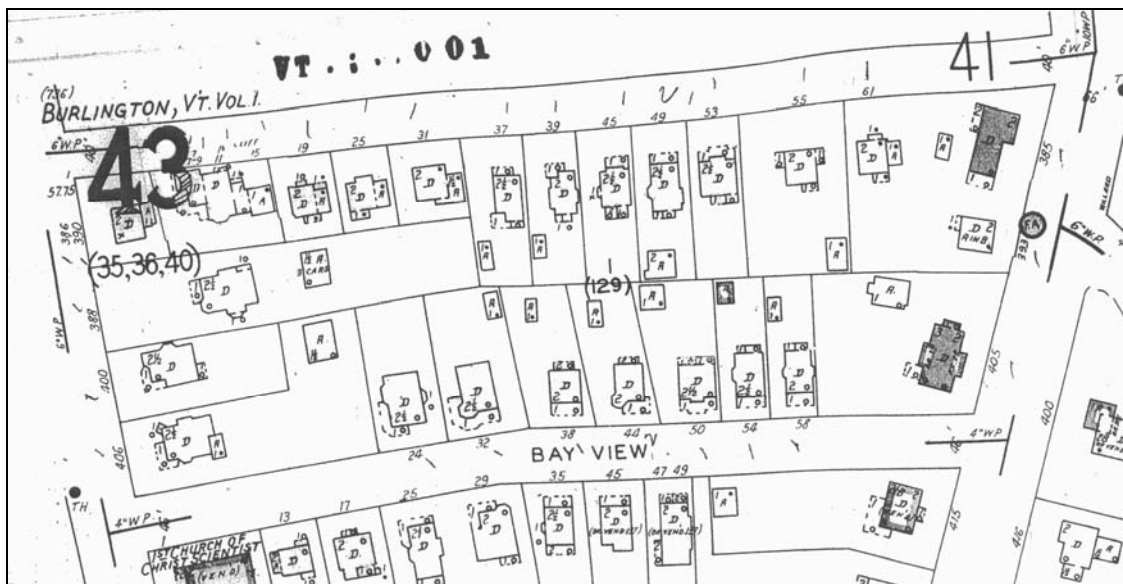
Traditional Vermont Neighborhood  
Case Study: Burlington, Vermont  
Summary of Block One:  
Area Bounded by Bayview Ave., S. Union St., Cliff St., and S. Willard St.

MAPS OF BLOCK ONE

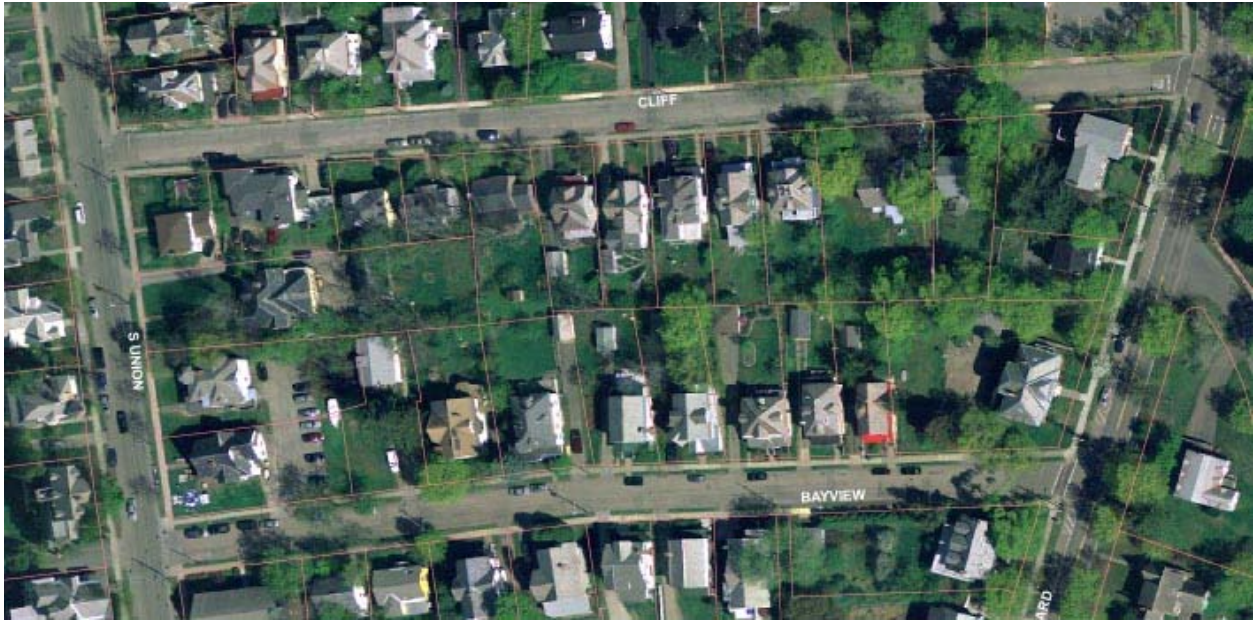
Sanborn Map (insurance map showing building footprints in 1919)



Sanborn map (Insurance map showing building footprints in 1942)

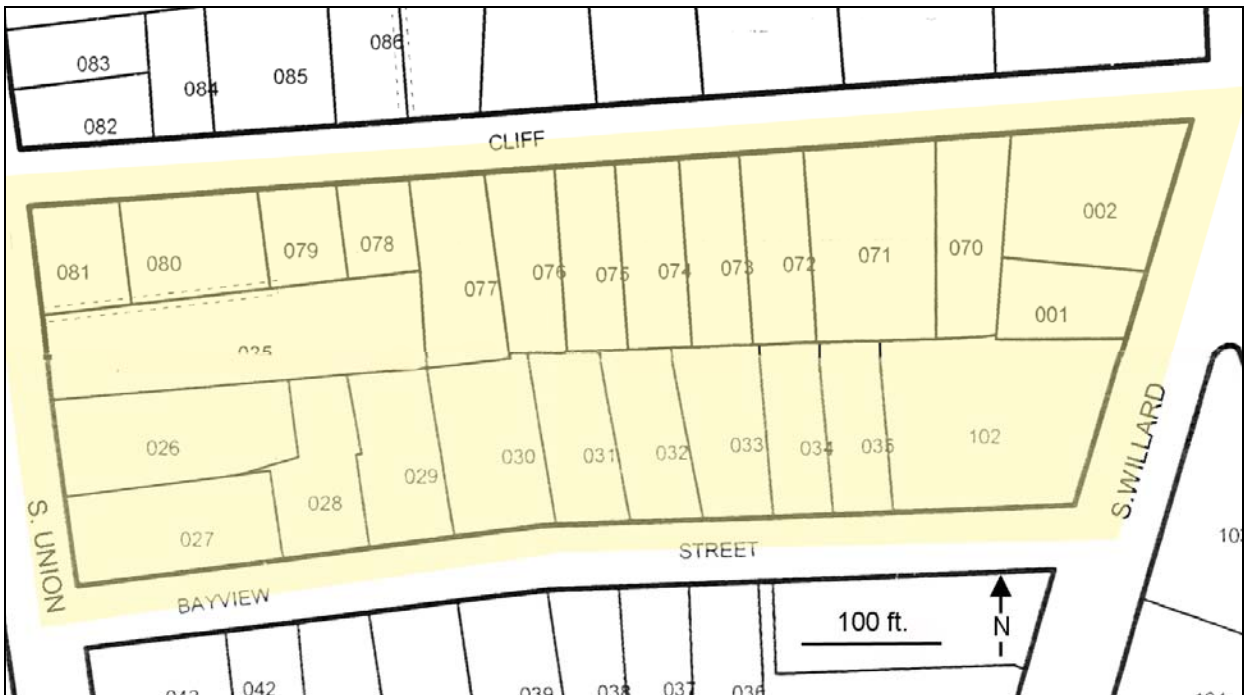


Ortho Map



Plat Map (Tax Map)

*Area studied is highlighted in yellow*



## DIMENSIONAL STANDARDS OF BLOCK ONE

Land Use: 22 single family lots, one 2-family lot, one 5-family lot and two 6-family lot

Units per Acre *	Lot Size	Lot Width	Lot Depth	Building Coverage	Total Living Area of Houses
Gross density: 6.7	Av.: 0.18 ac (7,747 sq. ft.)	Av.: 76 ft.	Av: 128 ft.	Median: 23%	Av.: 1,625 sq. ft.
Net density: 8.2	Range: 0.08 - 0.43 ac. ( 3,406 – 18,697 sq. ft.)	Range: 41 - 247 ft.	Range: 66 - 260 ft.	Range: 13 - 36%	Range: 660 – 3,209 sq. ft.

\*Gross density is based on the number of units divided by the size of the block, measured from the middle of the street on each side. Net density is based on the number of units divided by the sum of the lot sizes in the town records. Lot size and building coverage are also based on lot sizes in the town records.

## PHOTOS OF BLOCK ONE

South Union Street has three large, multi-family structures, while the rest of the block consists primarily of two-story houses, many with front porches. As these photos illustrate, the block is dominated by spacious, well-appointed homes with garages, gardens and trees, all on one-sixth of an acre or less. This is considered a small lot by today’s standards, but these homes are highly sought after for their high-quality architecture and desirable location near to schools, jobs and services.



*Looking down Bayview St. toward the lake, steps and porches provide both a privacy buffer and an inviting entry to the homes.*



*Parking area behind two 6-unit apartments on S. Union St.*



Cliff St.

*In approximately 1940, a large lot was subdivided to allow some new houses to be built on this Victorian-era block.*



*A detached garage and back yard on Bayview Street.*